

По вопросам продаж и поддержки обращайтесь:

Архангельск (8182)63-90-72
Астана +7(7172)727-132
Белгород (4722)40-23-64
Брянск (4832)59-03-52
Владивосток (423)249-28-31
Волгоград (844)278-03-48
Вологда (8172)26-41-59
Воронеж (473)204-51-73
Екатеринбург (343)384-55-89
Иваново (4932)77-34-06
Ижевск (3412)26-03-58
Казань (843)206-01-48

Калининград (4012)72-03-81
Калуга (4842)92-23-67
Кемерово (3842)65-04-62
Киров (8332)68-02-04
Краснодар (861)203-40-90
Красноярск (391)204-63-61
Курск (4712)77-13-04
Липецк (4742)52-20-81
Магнитогорск (3519)55-03-13
Москва (495)268-04-70
Мурманск (8152)59-64-93
Набережные Челны (8552)20-53-41

Нижний Новгород (831)429-08-12
Новокузнецк (3843)20-46-81
Новосибирск (383)227-86-73
Орел (4862)44-53-42
Оренбург (3532)37-68-04
Пенза (8412)22-31-16
Пермь (342)205-81-47
Ростов-на-Дону (863)308-18-15
Рязань (4912)46-61-64
Самара (846)206-03-16
Санкт-Петербург (812)309-46-40
Саратов (845)249-38-78

Смоленск (4812)29-41-54
Сочи (862)225-72-31
Ставрополь (8652)20-65-13
Тверь (4822)63-31-35
Томск (3822)98-41-53
Тула (4872)74-02-29
Тюмень (3452)66-21-18
Ульяновск (8422)24-23-59
Уфа (347)229-48-12
Челябинск (351)202-03-61
Череповец (8202)49-02-64
Ярославль (4852)69-52-93

Единый адрес: smg@nt-rt.ru | <http://www.sigma.nt-rt.ru>



Centrifuge

6-16S



Refrigerated Centrifuge

6-16KS

SIGMA 6-16S No. 10390 (220 – 240 V, 50/60 Hz), No. 10391 (208 V, 60 Hz), No. 10392 (200 V, 50/60 Hz)

- Universal table top centrifuge; speed range up to 13,500 rpm
- Control unit Spincontrol S
- Various angle and swing-out rotors available
- Lid can easily be opened due pneumatic swing support
- Maximum capacity of 4 x 800 ml down to microtubes with different adapters in the same bucket
- Maintenance-free induction drive motor A Microcontroller controls speed or gravitational field, time
- 2 Motorized lid locks
- Suitable for low speeds e.g. for cell sedimentation, accuracy +/- 1 rpm
- Magnetic rotor identification prevents the rotor from overspeeding
- Stainless steel bowl
- Imbalance switch
- No need to open the casing for emergency lid lock release
- Produced according to national and international safety regulations (e.g. EN 61010-2-020)
- Window in the centrifuge lid for external speed control
- Backlighted keys for start, stop, lid open

SIGMA 6-16HS No. 10393 (220 – 240 V, 50/60 Hz)

- heated version of 6-16S
- Max. rotortemp +60°C
- Special for ASTM crude oil centrifugation max. +70°C

SIGMA 6-16KS No. 10395 (220 – 240 V, 50 Hz), No. 10396 (220 - 240 V, 60 Hz), No. 10397 (208 V, 50/60 Hz), No. 10398 (200 V, 50/60 Hz)

- refrigerated version of 4-16S
- Universal refrigerated table top centrifuge; speed range up to 15,000 rpm
- Possibility of precooling the rotors during standstill Refrigerant CFC-free (R404a)

SIGMA 6-16KHS No. 10399 (220 – 240 V, 50 Hz)

- heated version of 6-16KS
- Max. Rotortemperature 40°C up to 60°C depending on rotor and speed

SIGMA 6-16KRL (220 – 240 V, 50 Hz)

For Robot systems / Separate brochure

Biosafe rotor

6-16S

6-16KS

Rotor No.	max. rpm	max. RCF	max. rpm	max. RCF
11650 + 1 x 13621	4,200	3,589	4,700	4,495
11650 + 2 x 13635	4,200	3,846	4,700	4,816
11650 + 2 x 13650	4,200	4,181	4,700	5,236

- 11650** Swing-out rotor for 4 buckets no. 13621, 13635, 13650
13621 Bucket for microtiter-, filter and deepwellplates, incl. plate holder no. 17980 max. height of plates 86 mm, 1 set = 4 pcs.
13635 Aluminium bucket for carriers (no. 18605 - 18607) for culture tubes 15 and 50 ml, 1 set = 2 pcs.
13650 Round bucket, Biosafe sealable with cap no. 17170, for adapter, (no. 17651 - 17699, 13654, 13655), for 800 ml tube no. 13656, max. tube length 145 mm, 1 set = 2 pcs.

Adapter for bucket 13650, 1 set = 2 pcs.

- 17653** 26 x **1.5/2.0 ml**, max. Ø 11 mm, e.g. no. 15008, 15040
17651 20 x **4 - 7 ml**, max. Ø 15.5/18 x 50 - 75 mm, e.g. Monovette, Primavette,
17652 36 x **5 ml**, max. Ø 12.5 x 60 - 80 mm, e.g. no. RIA tube 15060, hemolyse tubes
17656 22 x **5 - 6 ml**, max. Ø 13.5/17.5 x 70 - 90 mm, e.g. no. RIA tube 15060 Vacutainer -, hemolyse tubes
17654 32 x **7 ml**, max. Ø 12.5 x 85 - 115 mm, e.g. no. 15007, 15027
17658 19 x **9 - 15 ml**, max. Ø 17.2/19.5 x 85 - 115 mm, e.g. no. 15015, 15020, 15022, 15023, 15024 and Monovettes 9 - 10 ml
17655 20 x **10 - 12 ml**, max. Ø 16.2/18 x 65 - 90 mm, e.g. no. 15000, 15010, 15039
17659 12 x **15 ml** Culture no. 15115, cap Ø max. 23 mm
17660 15 x **15 ml** Culture no. 15115 cap Ø max. 22 mm
17670 8 x **25 - 30 ml**, max. Ø 25.4/30 x 90 - 115 mm, e.g. no. 15025, 15026, 15029, 15030, 15032, 15033
17662 7 x **30 ml**, max. Ø 25/31 x 65 - 95 mm
17676 7 x **40 - 50 ml** max. Ø 29/32 x 90 - 115 mm, e.g. 13055, 15051, 15052
17675 4 x **50 ml**, max. Ø 35/38 x 90 - 115 mm, e.g. 15049, 15056, 15050
17677 5 x **50 ml** Culture, e.g. no. 15151, Nunc, Corning, Falcon and Greiner
17678 5 x **50 ml** Culture, max. Ø 29,4/36 x 90 - 115 mm
17679 7 x **50 ml** Culture, max. Ø 29/36 x 90 - 115 mm*
17685 3 x **78 - 85 ml**, max. Ø 38/40 x 90 - 110 mm, e.g. no. 13085, 15076, 15080
17690 2 x **100 ml**, max. Ø 45/47 x 85 - 110 mm, e.g. no. 15100, 15102, 15103, 15106
17692 1 x **125 ml**, max. Ø 51 x 90 - 115 mm, e.g. no. 15125
17694 1x **150 - 250 ml** Culture angle 88°, max. Ø 60 x 120 - 140 mm e.g. Falcon 175, 225 ml, Labcon 175, 225 ml
17696 1 x **200 ml** approx., max. Ø 57 x 90 - 115 mm, e.g. no. 15202
17693 1 x **200ml - 250 ml** Culture, angle 60°, max. Ø 61.5 x 140 - 164 mm e.g. no. 15175, 15174 Corning tubes, up to 172 mm
17695 1 x **200 - 250 ml**, max. Ø 57.5 x 90 - 137 mm, e.g. no. 15201, 15206, 15250, 15251, 15254
17698 1 x **250 ml**, max. Ø 61.5 x 90 - 125 mm, e.g. no. 13255, 15247, 15249
17682 1 x **500 ml** Culture, no. Corning 431123, angle 75°, Ø 96 x 150 mm
13655 1 x **500 ml**, max. Ø 69,5 x 165 mm, e.g. no. 13507+17256, 15508
13654 1 x **500 - 750 ml**, Ø 85 x 130 - 173 mm, e.g. no. 15501, 15751
13656 1 x **800 ml**, Ø 100 x 135 mm, bottle sealable with cap no. 17123

Adapter for bucket 13635, 1 set = 2 pcs.

- 18605** 24 x **15 ml** Culture e.g. no. 15115
18603 10 x **30 ml**, max. Ø 25/31 x 65 - 95 mm,
18606 10 x **50 ml** Culture e.g. no. 15151
18607 8 x **50 ml** Culture, max. Ø 29,4/35 x 90 - 115 mm**
11651 Rotor complete 48 x **15 ml** Culture tubes complete, no. 11650, incl. 2 sets buckets no. 13650, 2 sets adapters no. 17659 and 48 tubes 15 ml no. 15115

* without bucket cap 17170

** with rim



11650



17170



17677



17659



13650



17660



17652



17653

17123



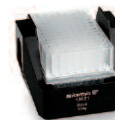
13656



17682



Corning 431123



13621



17670



17656



17658



13635



18606



18605



11651

6-16S

6-16KS

<i>Rotor No.</i>	<i>max. rpm</i>	<i>max. RCF</i>	<i>max. rpm</i>	<i>max. RCF</i>
11150 + 2 x 13215	4,500	4,120	5,100	5,292
11150 + 2 x 13220	4,100	3,007	4,100	3,007
11150 + 2 x 13221	4,500	3,622	5,100	4,653
11150 + 2 x 13233	4,500	3,668	5,100	4,711
11150 + 2 x 13234	4,300	3,680	4,300	3,680
11150 + 2 x 13235	4,500	4,302	5,100	5,525
11150 + 2 x 13236	4,500	4,256	5,100	5,467
11150 + 1 x 13420	4,200	3,806	4,700	4,766
11150 + 2 x 13550	4,500	4,845	4,700	5,285

11150 Swing-out rotor for 4 buckets no. 13215, 13220, 13221, 13233, 13234, 13235, 13236, 13420, 13550

1 set = 2 pcs.

13215 Rectangular bucket for adapter no. 18000 - 18200, sealable with cap no. 17112, max. tube length 115 mm

13220 Bucket for microtiter plates, max. height of plates 51 mm

13221 Bucket for microtiter plates, incl. plate holder no. 17979, max. height of plates 56 mm

13233 Multiple carrier for 50 x tubes approx. 5 ml, max. Ø 12.5 x 70 - 90 mm, e.g. RIA tube no. 15060

13234 Multiple carrier for 4 x 100 ml, Ø 45 x 92 - 100 mm e.g. no. 15100, 15102, 15103, 15106, incl. rubber cushion no. 16051

13235 Multiple carrier for 7 culture tubes 50 ml no. 15151

13236 Multiple carrier for 12 culture tubes 15 ml no. 15115

13420 Double rectangular bucket, sealable with cap no. 17114, for rectangular carriers no. 18000 - 18250, 18615, 1650, max. tube length 110 mm, 1 set = 4 pcs.

13550 Round bucket, sealable with cap no. 17134 or 17135, for round carriers Ø 85 mm (no. 17344 - 17404), adapter 13555, 750 ml bottles no. 15751, max. tube length 155 mm

17112 Rectangular polysulfone sealing cap

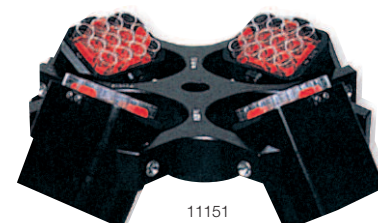
17114 Rectangular polysulfone sealing cap, clear

17134 Round aluminium sealing cap

17135 Round polysulfone sealing cap

11151 Swing-out rotor 48 x 15 ml complete, no. 11150, incl. 2 sets rectangular buckets no. 13215, 2 sets rectangular carriers no. 18015 and 48 PP-tubes 15 ml no. 15023

11152 Swing-out rotor 96 x 15 ml complete, no. 11150, incl. 1 set double rectangular buckets no. 13420, 4 sets rectangular carriers no. 18015 and 96 PP-tubes 15 ml no. 15023



Adapter for bucket 13550, 1 set = 2 pcs

- 17350** 24 x **0.5/0.75 ml**, max. Ø 8/10 x 28/31 mm, e.g. no. 15005
17353 20 x **1.5/2.0 ml**, max. Ø 11 mm, e.g. no. 15008, 15040
17351 12 x **4 - 7 ml**, max. Ø 15.5/18 x 50 - 75 mm, e.g. Monovettes 4 ml
17352 25 x **5 ml**, max. Ø 12.5/13.5 x 65 - 80 mm, e.g. no. RIA tube 15060, hemolyse tubes
17356 16 x **5 - 6 ml**, max. Ø 13.5/17.5 x 70 - 90 mm, e.g. no. RIA tubes, 15060, Vacutainer, hemolyse
17354 16 x **7 ml**, max. Ø 12.5 x 85 - 115 mm, e.g. no. 15007, 15027
17355 12 x **10 - 12 ml**, max. Ø 16.2/19 x 65 - 90 mm, e.g. no. 15000, 15010, 15039
17358 12 x **10 - 15 ml**, max. Ø 17.2/19.5 x 90 - 115 mm, e.g. no. 15015, 15020, 15022, 15023, 15024 and Monovettes 9 - 10 ml
17359 9 x **15 ml Culture**, max. cap Ø 23 mm, e.g. no. 15115, Falcon, Corning and Greiner tubes
17360 10 x **15 ml Culture**, max. cap Ø 22 mm, Falcon, Greiner, tubes
17370 5 x **25 - 30 ml**, max. Ø 25.4/29 x 85 - 115 mm, e.g. no. 15025, 15026, 15029, 15030, 15032, 15033
17362 5 x **30 ml**, max. Ø 25/31 x 65 - 95 mm
17376 4 x **40 - 50 ml**, max. Ø 29/34 x 85 - 110 mm, e.g. no. 15051, 15052, 13055
17375 3 x **50 ml**, max. Ø 35/38 x 90 - 110 mm, e.g. no. 15049, 15050, 15056
17377 4 x **50 ml Culture**, e.g. no. 15151, Nunc, Corning, Falcon and Greiner
17378 4 x **50 ml ****, max. Ø 29.4/36 x 90 - 120 mm
17385 1 x **78 - 85 ml**, max. Ø 38/40 x 85 - 115 mm, e.g. no. 13085, 15076, 15080
17390 1 x **100 ml**, max. Ø 45/50 x 85 - 110 mm, e.g. no. 15100, 15102, 15103, 15106
17395 1 x **125 ml**, max. Ø 51 x 90 - 115 mm, e.g. no. 15125
17401 1 x **175 - 250 ml**, max. Ø 57.5 x 90 - 150 mm, e.g. no. 15201, 15206, 15250, 15251, 15254
17393 1 x **175 - 250 ml** with pointed bottom angle 60°, max. Ø 61.5 x 120 - 165 mm, e.g. no. 15174, 15175, Corning tubes
17402 1 x **150 - 250 ml** with pointed bottom angle 88°, max. Ø 60 x 120 - 140 mm, e.g. Nalgene 150 and 200 ml, Labcon 175, 250 ml
17400 1 x **200 ml**, max. Ø 57 x 90 - 115 mm, e.g. no. 15202
17347 1 x **250 ml**, max. Ø 61.5 x 90 - 125 mm, e.g. no. 15247, 15248, 15249
17404 1 x **430 ml** max. Ø 76 x 135 - 152 mm, e.g. no. 15430
13555 1 x **500 ml**, max. Ø 69 x 165 mm, e.g. no. 15508
15751 1 x **680 ml**, PP Ø 85 x 173 mm, incl. screw cap*

* Single bottle
 ** with rim

32 x 1.5 – 2.0 ml swing out rotor

6-16S

6-16KS

Rotor No.	6-16S		6-16KS	
	max. rpm	max. RCF	max. rpm	max. RCF
11148	12,000	13,523	13,200	16,363

No.	Adapter
13021	0.2 ml PCR no. 15021
13000	0.4 ml Reaction vials no. 15014
13002	0.5 ml - 0.75 ml Reaction vials no. 15005



17350



17352



17353



17358



17359



17390



15751



11148

6-16S

6-16KS

Rotor No.	max. rpm	max. RCF	max. rpm	max. RCF
11156 + 3 x 13127	4,500	4,324	5,100	5,554

- 11156** Sixplace rotor for buckets 13127
13127 Rectangular bucket, sealable with cap no. 17112, for rectangular carriers (no. 18002 - 18200), max. tube length 115 mm, 1 set = 2 pcs.

Adapter for bucket 13127, 13420, 1 set = 2 pcs.

- 18002** 20 x **1.5/2.0 ml**, max. Ø 11 mm, e.g. no. 15008, 15040
18005 20 x **5 ml**, flat and round bottom, max. Ø 12.2 x 60 - 75 mm, e.g. no. RIA 15060
18105 20 x **5 ml**, flat and round bottom, max. Ø 12.2 x 60 - 75 mm, e.g. no. RIA 15060, **decantable**
18009 20 x **5 - 6 ml**, max. Ø 12.8 x 70 - 90 mm, e.g. no. Hemolyse, RIA 15060
18012 12 x **6 - 7 ml**, max. Ø 13.5/18 x 65 - 90 mm, e.g. Vacutainer
18007 20 x **7 ml**, max. Ø 12.3 x 80 - 105 mm, e.g. no. 15007, 15027
18107 20 x **7 ml**, max. Ø 12.3 x 80 - 105 mm, e.g. no. 15007, 15027 **decantable**
18010 12 x **10 - 12 ml**, max. Ø 16.8/17.5 x 60 - 85 mm, e.g. no. 15000, 15010, 15039
18015 12 x **10 - 15 ml**, max. Ø 17 x 90 - 105 mm, e.g. no. 15015, 15020, 15022, 15023, 15024
18115 12 x **10 - 15 ml**, max. Ø 17 x 90 - 105 mm, e.g. no. 15015, 15020, 15022, 15023, 15024 **decantable**
18016 4 x **15 ml** culture no. 15115
18018 6 x **15 ml** culture ** e.g. no. 15115
18017 10 x **15 ml**, max. Ø 17.5/19.5 x 80 - 112 mm, e.g. 15015, 15020, 15022, 15023, 15024, Monovettes 9 - 10 ml
18025 5 x **25 ml**, max. Ø 24 x 85 - 105 mm, e.g. no. 15025, 15026
18030 5 x **27 - 30 ml**, max. Ø 25.4/27.5 x 80 - 110 mm, e.g. no. 15029, 15030, 15032
18022 2 x **30 ml**, max. Ø 25/31 x 65 - 95 mm
18051 2 x **40 - 50 ml**, max. Ø 29/35 x 80 - 110 mm, e.g. no. 13055, 15051, 15052
18050 2 x **50 ml**, max. Ø 35/38 x 85 - 110 mm, e.g. no. 15049, 15050, 15056
18052 2 x **50 ml** Culture no. 15151
18053 2 x **50 ml** Culture* max. Ø 29.5/36 x 85 - 118 mm
18085 1 x **78 - 85 ml**, max. Ø 38/40 x 85 - 112 mm, e.g. no. 13085, 15074, 15075, 15076, 15080
18100 1 x **100 ml**, max. Ø 45.5/48 x 85 - 110 mm, e.g. no. 15100, 15102, 15103, 15106
18125 1 x **125 ml**, max. Ø 51 x 90 - 120 mm, e.g. no. 15125
18250 1 x **175 - 200 ml**, max. Ø 57 x 90 - 137 mm, e.g. no. 15201, 15206 in 13420: 15250, 15251, 15254
18200 1 x **200 ml**, max. Ø 57 x 90 - 115 mm, e.g. no. 15202
18615 10 x **15 ml** Culture, e.g. no. 15115
18650 6 x **50 ml** Culture, e.g. no. 15151

* with rim

** without cap 17112



11156



17112



18007



18005



13127



18100



18050



18025



18015



18200



18052



18016



18012



11157

6-16S, 6-16HS, 6-16KS, 6-16KHS

<i>Rotor</i>	<i>max.</i>	<i>max.</i>
<i>No.</i>	<i>rpm</i>	<i>RCF</i>
11165 + 2 x 13113	3,000	2,143
11165 + 2 x 13114	3,000	1,922
11165 + 2 x 13116	3,000	1,741

Max. g-force for glass tubes 800

- 11165** Swing-out rotor for 4 buckets no. 13113, 13114, 13116 for glass tubes for mineral oil
- 13113** Bucket sealable with cap no. 17107, for 1 glass tube for mineral oil 100 ml, 8", Ø 37 x 203 mm, ASTM D 91/96 no. 15130, incl. adapter no. 16103, 1 set = 2 pcs.
- 13114** Bucket for 1 glass tube for mineral oil 100 ml, 6", Ø 44 x 165 mm, ASTM D 96 no. 15132, incl. rubber cushion no. 16104, 1 set = 2 pcs.
- 13116** Bucket for 1 glass tube for mineral oil 100 ml, pear-shaped, Ø 59 x 160 mm, ASTM D 96 no. 15131, incl. rubber cushion no. 16106, 1 set = 2 pcs.
- 15130** Glass tube for mineral oil 100 ml, 8", Ø 37 x 200 mm, ASTM D 91/96, 1 set = 2 pcs.
- 15131** Glass tube for mineral oil 100 ml, 6", pear-shaped, Ø 59 x 160 mm, ASTM D 96, 1 set = 2 pcs.
- 15132** Glass tube for mineral oil 100 ml, 6", Ø 44 x 165 mm, ASTM D 96, 1 set = 2 pcs.
- 16103** PP/rubberadapter for glass tube for mineral oil 100 ml, 8" no. 15130, 1 set = 2 pcs.
- 16104** Rubber cushion for glass tube for mineral oil 100 ml, 6" no. 15132, 1 set = 2 pcs.
- 16106** Rubber cushion for glass tube for mineral oil 100 ml, pear-shaped, no. 15131, 1 set = 2 pcs.
- 17107** Round aluminium sealing cap, suitable for bucket no. 13113 with thread, 1 set = 2 pcs.
- 11166** Swing-out rotor 4 x 100 ml complete, no. 11165, incl. 2 sets buckets no. 13113, 4 mineral oil glass tubes 8" ASTM D91/96 no. 15130 and 2 sets adapters no. 16103, 13113 sealable with cap no. 17107

6-16S

6-16KS

<i>Rotor</i>	<i>max.</i>	<i>max.</i>	<i>max.</i>	<i>max.</i>
<i>No.</i>	<i>rpm</i>	<i>RCF</i>	<i>rpm</i>	<i>RCF</i>
11118 + 13218	5,700	5,485	5,700	5,485

- 11118** Swing-out rotor for microtiter plates complete, incl. 2 carriers no. 13218, incl. plate holder no. 17978, max. height of plates 80 mm
- 13218** Bucket for microtiter plates, sealable with cap no. 17108, incl. plate holder no. 17978, max. height of plates approx. 80 mm, 1 set = 2 pcs.
- 17108** Polysulfone sealing cap, clear, incl. 4 clips no. 17118, 1 set = 2 pcs.
- 17118** Clip for lid no. 17108, 1 set = 2 pcs.
- 17978** Plate holder for bucket no. 13218, 1 set = 2 pcs.



17107

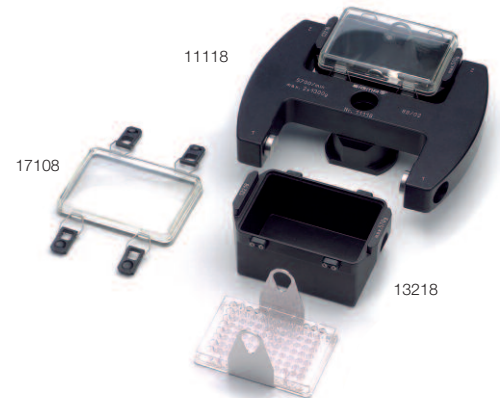


13116

15131

13114

15130



11118

17108

13218

17978



12449



12174







12269



12265

6-16S

6-16KS

Typ	Rotor No.	tubes	max. rpm	max. RCF	max. rpm	max. RCF
 48 x 1.5-2.0 ml Biosafe 100 x 1.5-2.0 ml	12449	15008, 15040	13,500	20,376	15,000	25,155
	12201	15008, 15040	9,000	14,761	9,600	16,795
<i>Adapter</i>	<i>Order No.</i>					
0.2 ml PCR	13021	15042				
0.4 ml	13000	15014				
0.5 – 0.75 ml	13002	15005				
20 x 10 ml	12168	15000, 15039	12,500	17,119	14,000	21,475
12 x 15 ml Culture	12170	15115	12,500	17,496	13,500	20,376
24 x 15 ml Culture	12174	15115	10,000	15,531	12,000	20,285
12 x 30 ml	12172	15029, 15032	12,500	19,216	14,000	21,475
<i>Adapter</i>	<i>Order No.</i>					
10 ml	13059	15000, 15039				
 8 x 50 ml Biosafe	12266	15051, 15052	12,500	17,469	14,000	21,913
<i>Adapter</i>	<i>Order No.</i>					
15 ml	16018	15022				
15 ml glass	16018	15085				
15 ml round bottom	13062					
30 ml glass	16030	15086				
 8 x 50 ml Culture Biosafe	12269	15151	12,500	18,168	13,500	21,191
<i>Adapter</i>	<i>Order No.</i>					
15 ml Culture	13060	15115				
50 ml round bottom	13079	15051, 15052				
 6 x 85 ml Biosafe	12265	15076, 15080	12,500	18,517	14,000	23,228
<i>Adapter</i>	<i>Order No.</i>					
10 ml	13084	15000, 15039				
15 ml glass	16019	15085				
15 ml Culture	13081	15115				
15 ml round bottom	13063					
30 ml	13083	15029, 15032				
30 ml glass	16031	15086				
50 ml Culture	13080	15151				
50 ml	13082	15051, 15052				



1.5 – 2,0 ml



10 ml



15 ml
Culture



30 ml



50 ml



50 ml
Culture



80 ml




12600



12356

6-16S

6-16KS


<i>Typ</i>	<i>Rotor No.</i>	<i>tubes</i>	<i>max. rpm</i>	<i>max. RCF</i>	<i>max. rpm</i>	<i>max. RCF</i>
 6 x 250 ml Biosafe	12356	13255, 15247, 15249	9,000	13,131	11,200	20,335
<i>Adapter</i>	<i>Order No.</i>					
9 x 1.5 – 2.0 ml	14122	15008, 15040				
6 x 10 ml	14124	15000, 15039				
4 x 15 ml Culture	14125	15115				
2 x 30 ml	14127	15029, 15032				
1 x 50 ml	14129	15051, 15052				
1 x 50 ml Culture	14131	15151				
1 x 85 ml	14134	13085, 15076, 15080				

In 6-16KHS, 6-16HS
max. Rotortemp. +50 °C



6-16S

6-16KS

<i>Typ</i>	<i>Rotor No.</i>	<i>tubes</i>	<i>max. rpm</i>	<i>max. RCF</i>	<i>max. rpm</i>	<i>max. RCF</i>
 6 x 500 ml Biosafe	12600	13507, 15508	8,000	11,949	9,600	17,207
<i>Adapter</i>	<i>Order No.</i>					
12 x 1.5 – 2.0 ml	14151	15008, 15040				
8 x 10 ml	14144	15000, 15039				
5 x 15 ml Culture	14149	15115				
3 x 30 ml	14146	15029, 15032				
2 x 50 ml	14150	15051, 15052				
2 x 50 ml Culture	14148	15151, 15115				
+ 2 x 15 ml Culture						
1 x 85 ml	14153	13085, 15076, 15080				
1 x 250 ml Culture	14157	15174, 15175				
1 x 250 ml	14155	13255, 15247, 15249				

In 6-16KHS, 6-16HS
max. Rotortemp. +50 °C




All angle rotors with hermetic or Biosafe Aluminium lid

Spincontrol S



Spincontrol S

Display	TFT
Plain text pop up windows	+
Permanent display preselected, actual values	+
Display shows dimensions	+
Languages	
Timer	10 sec - 99 h 59 min
Timing after set speed has been reached	+
Time increments [sec]	60;1
Short run	+
Continuous run	+
Speed increments [rpm]	10;1
Display speed and g-force	+
g-force increments [xg]	10;1
Temperature increments [°C] ¹	1
Switchable °C, °F ¹	+
Standstill cooling, switchable ¹	+, +
Standstill heating, switchable ²	+, +
Rapid cooling program: Rapid_temp ¹	+
Start refused with exceeded temperature tolerance, tolerance preselectable ¹	+
Programs	60
User defined program name	+
Program list shows all parameters	+, +
Linear acceleration curves	10
Quadratic acceleration curves	10
User defined acceleration curves	10
Linear deceleration curves	10
Quadratic deceleration curves	10
User defined deceleration curves	10
Brakeless	+
Combination deceleration a. brakeless from 1000 - 100 rpm selectable	+
Acoustic signal, switchable	+, +
Signal length preselectable	+
Optical display standstill	+
Counting cycles centrifuge, each rotor	+, +
Pop up window end of rotor life time	+
Automatic lid opening at the end of the run, switchable	+, +
All rotors preprogrammed speed, g-force, radius	+
Max. radius decreasable	+
Calculation for liquid density >1.2 g/cm ³	+
Start delay	+
Control unit lockable	+
Code protection	+
Run monitoring	+
Microprocessor controlled	+

¹ only for 6-16KS, 6-16KHS

² only for 6-16KHS



17922 Trolley
(w x d x h) (581 x 684 x 515 mm)



17921 Trolley
(w x d x h) (791 x 684 x 497 mm)

Technical data	6-16S, 6-16HS	6-16KS
Power consumption [W]	1,680, 2.000*	2,280
Max. capacity [ml]	4 x 800	4 x 800
Max. speed [rpm]	13,500	15,000
Min. speed [rpm]	100	100
Interference suppression	EN 61326	EN 61326
Height x Width x Depth [mm]	483 x 581 x 711	485 x 790 x 711
Height with open lid [mm]	990	990
Weight without rotor [kg]	116	158
Kinetic energy max. [Nm]	106,950	154,007
Noise level at max. speed (approx.)		
Rotor 11650 + 13650 [dB (A)]	73	63
Rotor 12600 [dB (A)]	73	63
Max. acceleration rotor 11650 + 13650 [sec]	29 ¹	52 ²
rotor 12600 [sec]	144 ³	220 ⁴
Max. acceleration rotor 11650 + 13650 [sec]	34 ¹	49 ²
rotor 12600 [sec]	149 ³	168 ⁴
Temperature setting range	-; +70 °C	-20 °C – +40 °C
Min. rotor temperature		
Rotor 11150 + 13420 4.600 rpm [°C]	-	< 4 °C
Rotor 12356 10.000 rpm [°C]	-	< 4 °C

¹4.200 min⁻¹ · ²4.700 min⁻¹ · ³8.000 min⁻¹ · ⁴9.600 min⁻¹

По вопросам продаж и поддержки обращайтесь:

Архангельск (8182)63-90-72
Астана +7(7172)727-132
Белгород (4722)40-23-64
Брянск (4832)59-03-52
Владивосток (423)249-28-31
Волгоград (844)278-03-48
Вологда (8172)26-41-59
Воронеж (473)204-51-73
Екатеринбург (343)384-55-89
Иваново (4932)77-34-06
Ижевск (3412)26-03-58
Казань (843)206-01-48

Калининград (4012)72-03-81
Калуга (4842)92-23-67
Кемерово (3842)65-04-62
Киров (8332)68-02-04
Краснодар (861)203-40-90
Красноярск (391)204-63-61
Курск (4712)77-13-04
Липецк (4742)52-20-81
Магнитогорск (3519)55-03-13
Москва (495)268-04-70
Мурманск (8152)59-64-93
Набережные Челны (8552)20-53-41

Нижний Новгород (831)429-08-12
Новокузнецк (3843)20-46-81
Новосибирск (383)227-86-73
Орел (4862)44-53-42
Оренбург (3532)37-68-04
Пенза (8412)22-31-16
Пермь (342)205-81-47
Ростов-на-Дону (863)308-18-15
Рязань (4912)46-61-64
Самара (846)206-03-16
Санкт-Петербург (812)309-46-40
Саратов (845)249-38-78

Смоленск (4812)29-41-54
Сочи (862)225-72-31
Ставрополь (8652)20-65-13
Тверь (4822)63-31-35
Томск (3822)98-41-53
Тула (4872)74-02-29
Тюмень (3452)66-21-18
Ульяновск (8422)24-23-59
Уфа (347)229-48-12
Челябинск (351)202-03-61
Череповец (8202)49-02-64
Ярославль (4852)69-52-93

Единый адрес: smg@nt-rt.ru | <http://www.sigma.nt-rt.ru>